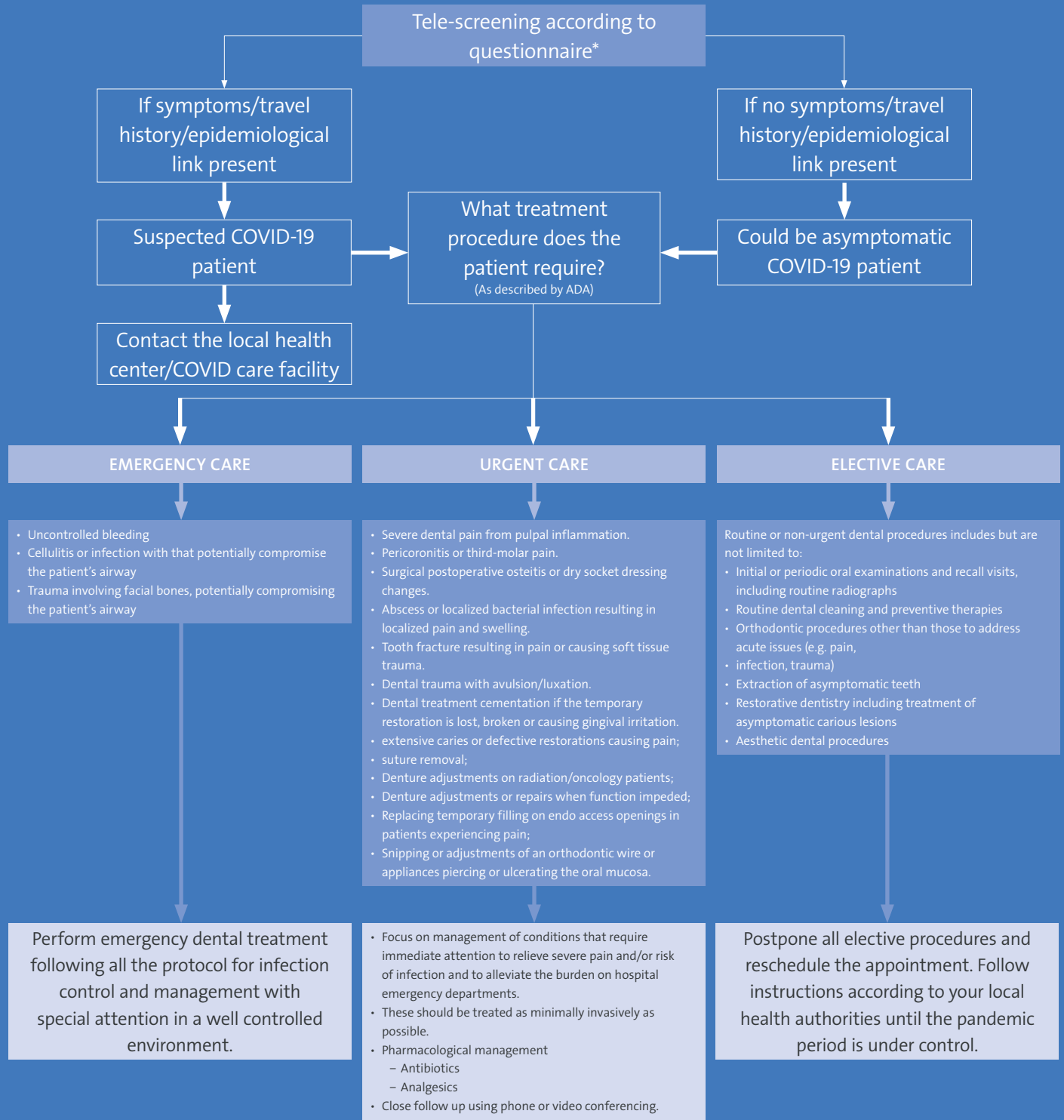


COVID-19 Decision Making Tree for Dental Professionals



DISCLAIMER

Please note that by publishing these texts Straumann merely supports clinics who wish to share their best practice guidelines. Straumann as a manufacturer of medical devices is not in a position to create or publish guidelines for clinics or dentists. Therefore, the content does not originate from Straumann and Straumann cannot accept any responsibility or liability in respect to this content. Neither Institute Straumann AG nor any of its affiliates accept any responsibility for completeness, accuracy, appropriateness and/or correctness of the information provided by third parties. Any content published here shall not be construed as any kind of recommendation or guarantee. Institute Straumann AG and all its affiliated companies explicitly disclaim any and all liability for any damages, claims etc. that may arise related to any information provided hereinafter.

All procedures should strictly adhere to the infection control protocol as issued by the CDC: <https://www.cdc.gov/coronavirus/2019-ncov/infection-control/control-recommendations.html>

* This guidance may change as the COVID-19 pandemic progresses. "Dentists should use their professional judgment in determining a patient's need for urgent or emergency care."