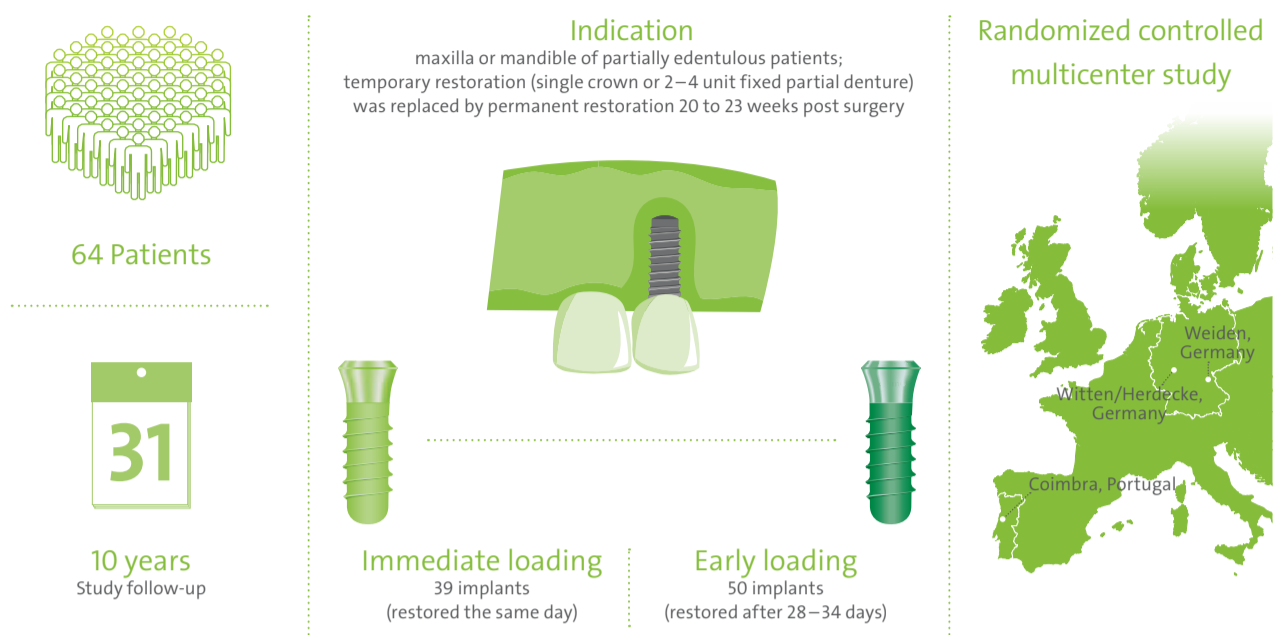


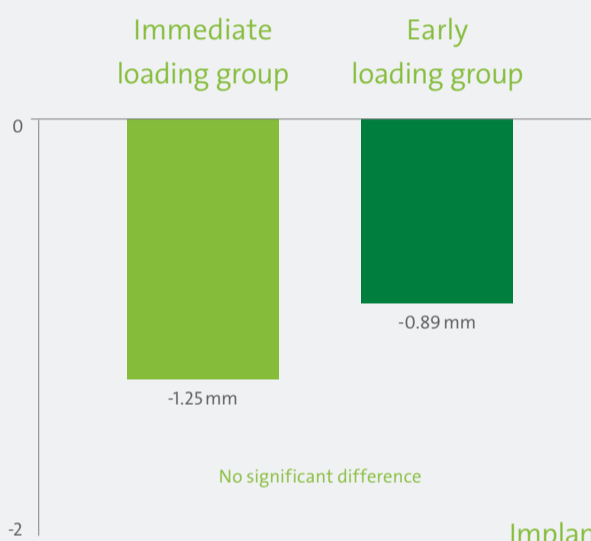
# SLActive® implants are a long term safe and predictable treatment option: 10-year results from a randomized controlled multicenter study

## Study design<sup>1</sup>



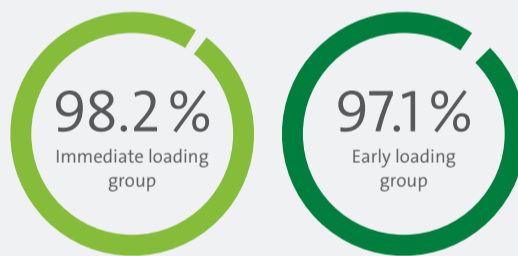
## Results

Mean crestal bone level change after 10 years<sup>2</sup>



After initial remodeling phase (5–6 month) where implant depth placement had an influence on the initial bone remodeling, no significant differences between the two treatment groups were found.

## Implant survival<sup>3</sup>



## Patient satisfaction



General satisfaction was excellent for over 90% of the patients (90% in the early and 92.3% in the immediate loading group).

Patient satisfaction for comfort, appearance, ability to chew and ability to taste was rated as excellent in at least 80.4% for all criteria.

## Conclusions

- SLActive® implants are a long-term safe and predictable treatment option.
- The 10 year follow-up of SLActive® implants placed in the posterior jaws confirmed comparable survival rates and bone level changes after early and immediate loading.

1. Nicolau P, Ten year results from a randomized controlled multicenter study with immediately and early loaded SLActive implants in posterior jaws. Abstract ref. number C147, accepted for EAO (25th annual scientific meeting of the European Association for Osseointegration), Oral presentation. To be published in Clin Oral Implants Res Special Issue: Abstracts of the EAO Congress, Paris, 29 September – 01. October 2016.  
2. Mean crestal bone level change between 5-6 month post-surgery (permanent fixed restoration placement) and 10 years  
3. Kaplan Meier survival analysis based on original patient population (96 patients and 127 implants)